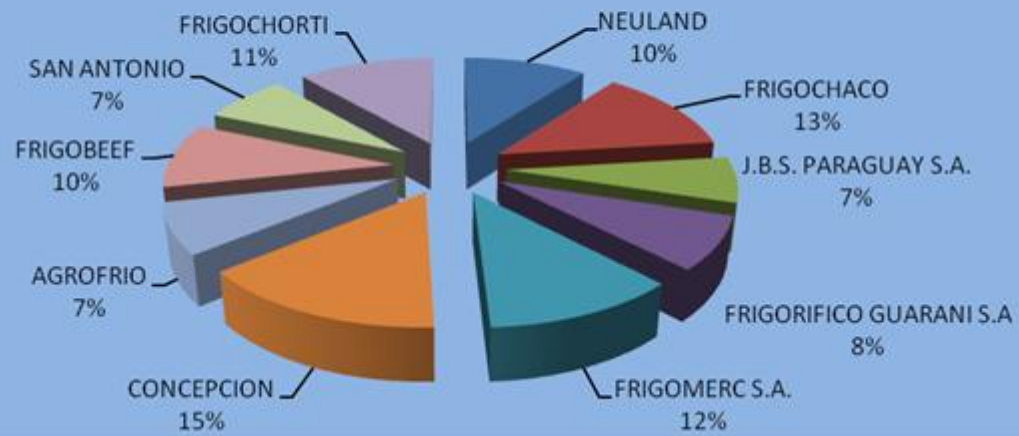


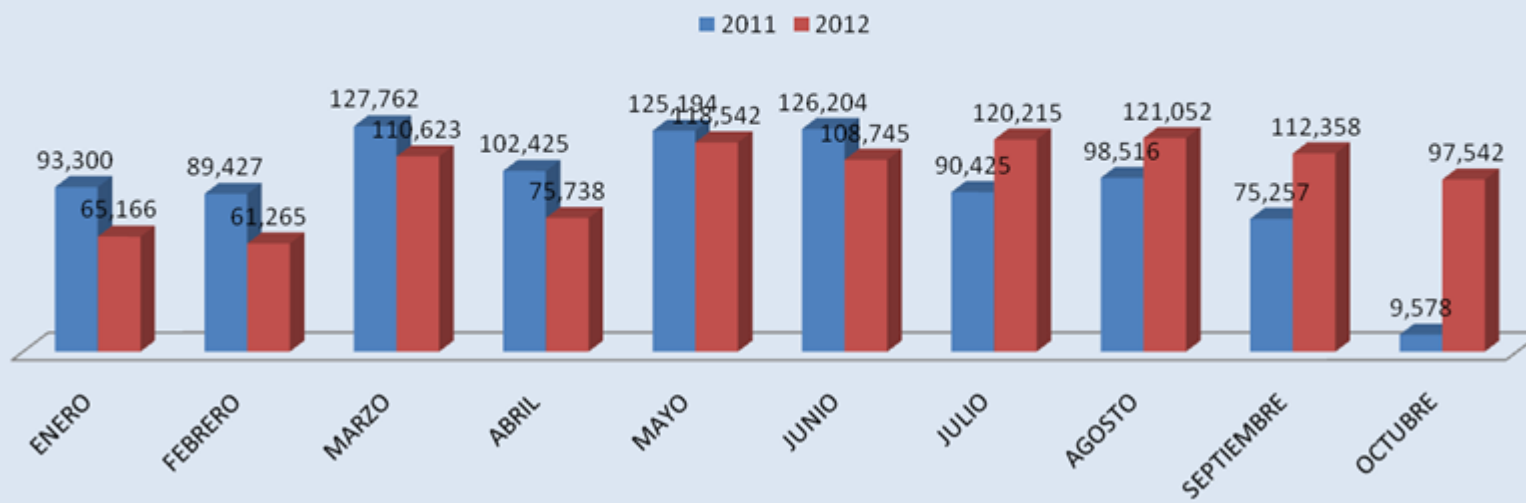
AÑO 2012

<i>FRIGORIFICOS</i>	<i>FAENA ENERO</i>	<i>FAENA FEBRERO</i>	<i>FAENA MARZO</i>	<i>FAENA ABRIL</i>	<i>FAENA MAYO</i>	<i>FAENA JUNIO</i>	<i>FAENA JULIO</i>	<i>FAENA AGOSTO</i>	<i>FAENA SEPTIEMBRE</i>	<i>FAENA OCTUBRE</i>	<i>FAENA 2012</i>	<i>FAENA %</i>
<i>NEULAND</i>	7,281	7,148	11,827	8,387	11,86	10,852	11,663	12,324	12,038	9,257	102,637	10.35%
<i>FRIGOCHACO</i>	8,026	7,029	15,095	13,318	15,125	15,061	15,160	15,635	11,331	10,322	126,102	12.72%
<i>J.B.S. PARAGUAY S.A.</i>	4,235	3,309	8,965	3,867	7,724	7,854	7,598	8,434	7,954	7,060	67	6.76%
<i>FRIGORIFICO GUARANI S.A</i>	5,131	4,77	7,296	5,941	9,36	9,528	9,459	9,879	8,688	7,585	77,637	7.83%
<i>FRIGOMERC S.A.</i>	7,017	6,745	10,969	10,895	14,215	13,387	13,800	14,083	13,091	10,670	114,872	11.59%
<i>CONCEPCION</i>	11,236	11,24	14,856	11,189	18,893	13,983	17,572	17,612	16,152	14,764	147,497	14.88%
<i>AGROFRIO</i>	4,778	4,496	8,535	5,608	10,243	9,672	7,906	7,559	9,820	6,277	74,894	7.56%
<i>FRIGOBEEF</i>	7,815	6,602	7,717	6,185	10,722	9,749	13,387	12,091	11,514	9,955	95,737	9.66%
<i>SAN ANTONIO</i>	4,617	3,94	9,67	3,176	8,517	8,325	8,438	7,880	8,427	8,378	71,368	7.20%
<i>FRIGOCHORTI</i>	5,03	5,986	15,693	7,172	11,883	10,334	15,232	15,555	13,343	13,274	113,502	11.45%
TOTAL	65,166	61,265	110,623	75,738	118,542	108,745	120,215	121,052	112,358	97,542	991,246	100.00%

Faena a Octubre 2012



Faenas comparativas enero a octubre 2011 -2012



Total de Faenas a Octubre 2011-2012

